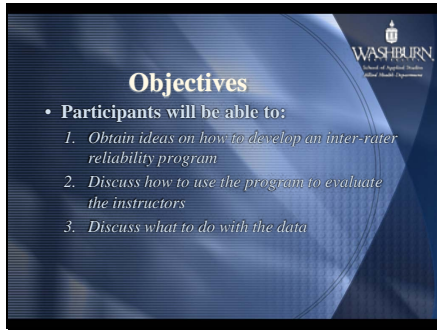


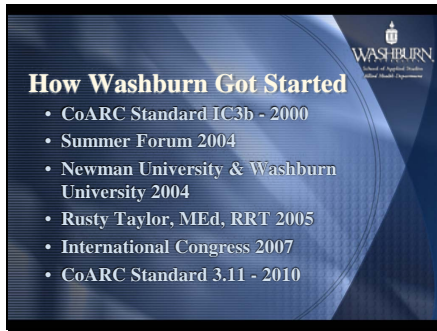
Slide 1



Slide 2



Slide 3



Slide 4

Student Evaluation

- **Standard 3.11**
 - *The program must develop processes that facilitate the development of inter-rater reliability among those individuals who perform student clinical evaluations.*
- **Evidence**
 - *Records of training*
 - *Results*

Slide 5

Where to Start

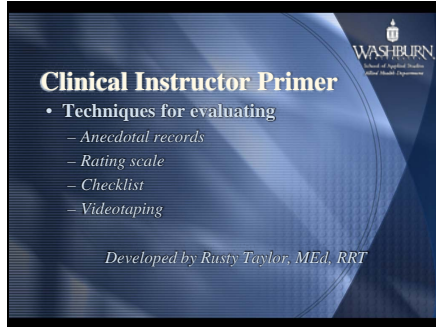
- **KISS**
- **Know your IT people**
- **Use students**
 - *AL 260/AL 360*
 - *Signed release*
- **Once developed**
 - *Test pilot*
 - *Get feedback*

Slide 6

How WU Uses the Program

- **Rusty Taylor, MEd, RRT**
 - *Clinical Instructor Primer: Clinical Evaluation*
 - *Inter-rater reliability*

Slide 7



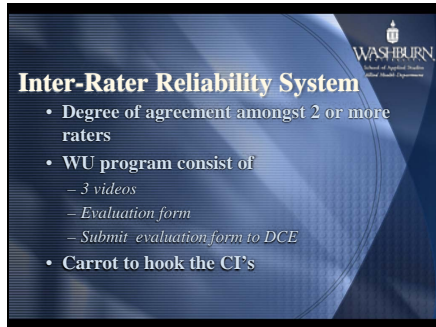
WASHBURN
School of Applied Health
Care Studies Department

Clinical Instructor Primer

- Techniques for evaluating
 - Anecdotal records
 - Rating scale
 - Checklist
 - Videotaping

Developed by Rusty Taylor, MEd, RRT

Slide 8

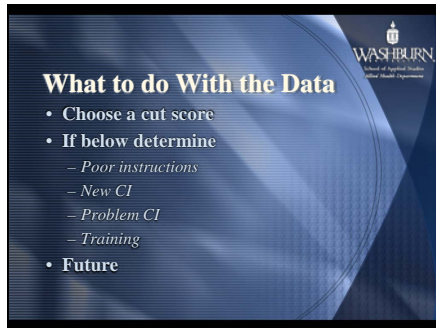


WASHBURN
School of Applied Health
Care Studies Department

Inter-Rater Reliability System

- Degree of agreement amongst 2 or more raters
- WU program consist of
 - 3 videos
 - Evaluation form
 - Submit evaluation form to DCE
- Carrot to hook the CI's

Slide 9

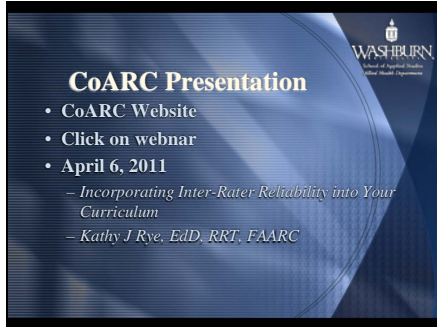


WASHBURN
School of Applied Health
Care Studies Department

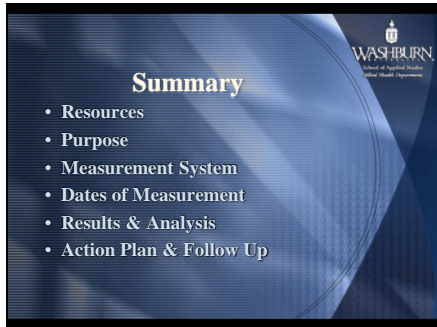
What to do With the Data

- Choose a cut score
- If below determine
 - Poor instructions
 - New CI
 - Problem CI
 - Training
- Future

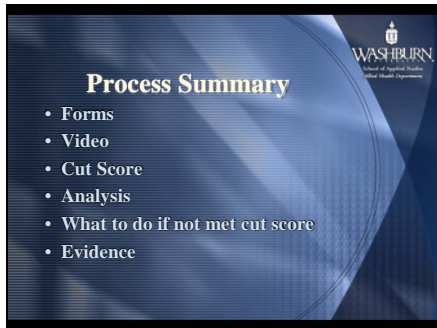
Slide 10



Slide 11



Slide 12



Slide 13



Rusty Taylor, MEd, RRT
rusty.taylor@washburn.edu
785-670-2172
<http://www.washburn.edu/sas/ah/rt/clinical/inter-rater>
<http://www.washburn.edu/sas/ah/rt/clinical/CIP>
