

Slide 1



---

---

---

---

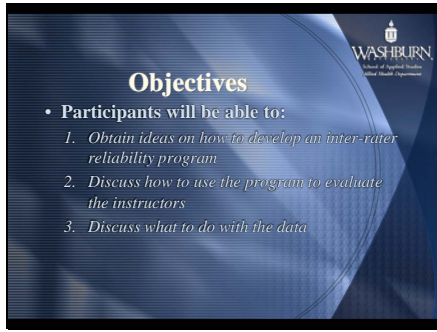
---

---

---

---

Slide 2



---

---

---

---

---

---

---

---

Slide 3



---

---

---

---

---

---

---

---

Slide 4

**Student Evaluation**

- **Standard 3.11**
  - *The program must develop processes that facilitate the development of inter-rater reliability among those individuals who perform student clinical evaluations.*
- **Evidence**
  - *Records of training*
  - *Results*

---

---

---

---

---

---

---

---

Slide 5

**Where to Start**

- **KISS**
- **Know your IT people**
- **Use students**
  - *AL 260/AL 360*
  - *Signed release*
- **Once developed**
  - *Test pilot*
  - *Get feedback*

---

---

---

---

---

---

---

---

Slide 6

**How WU Uses the Program**

- **Rusty Taylor, MEd, RRT**
  - *Clinical Instructor Primer: Clinical Evaluation*
  - *Inter-rater reliability*

---

---

---

---

---

---

---

---

Slide 7

**WASHBURN**  
School of Applied Health  
Professional Health Department

### Clinical Instructor Primer

- Techniques for evaluating
  - Anecdotal records
  - Rating scale
  - Checklist
  - Videotaping

*Developed by Rusty Taylor, MEd, RRT*

---

---

---

---

---

---

---

---

Slide 8

**WASHBURN**  
School of Applied Health  
Professional Health Department

### Inter-Rater Reliability System

- Degree of agreement amongst 2 or more raters
- WU program consist of
  - 3 videos
  - Evaluation form
  - Submit evaluation form to DCE
- Carrot to hook the CI's

---

---

---

---

---

---

---

---

Slide 9

**WASHBURN**  
School of Applied Health  
Professional Health Department

### What to do With the Data

- Choose a cut score
- If below determine
  - Poor instructions
  - New CI
  - Problem CI
  - Training
- Future

---

---

---

---

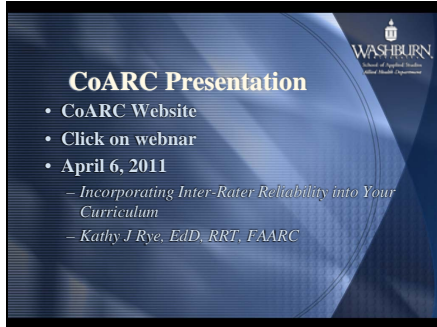
---

---

---

---

Slide 10



---

---

---

---

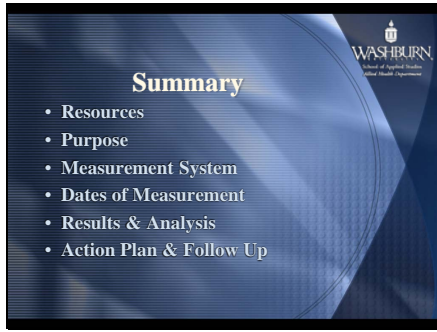
---

---

---

---

Slide 11



---

---

---

---

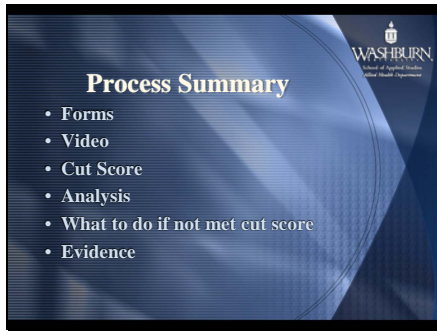
---

---

---

---

Slide 12



---

---

---

---

---

---

---

---

Slide 13



Rusty Taylor, MEd, RRT  
[rusty.taylor@washburn.edu](mailto:rusty.taylor@washburn.edu)  
785-670-2172  
<http://www.washburn.edu/sas/ah/rt/clinical/inter-rater>  
<http://www.washburn.edu/sas/ah/rt/clinical/CIP>

---

---

---

---

---

---

---

---